

Landau® 2006

Dare to explore
the unimagined.



"the motorhome people"®

The image shows the interior of a motorhome, likely a 2006 Landau. The space is divided into three main areas: a dining area on the left with a table and chairs, a kitchen on the right with a sink, stove, and microwave, and a living area in the center with two large chairs and a television. The interior is finished with light-colored wood cabinetry and a beige carpet. Large windows and skylights provide ample natural light. The overall atmosphere is warm and inviting.

Road warriors
never had it
so good.

Climb aboard the Landau, and you'll forget you're even on the road. The stylish, roomy interior appeals to your senses, the comfortable Flexsteel® furniture beckons you and the modern amenities grab your attention. The deep slide provides plenty of seating space for your most relaxing moments, like enjoying your favorite movie on the 27" Samsung® flat-screen, overhead TV with home theatre-quality sound. Completely surrounded by windows, the slide also offers plenty of sunlight and a pleasant, cross-ventilating breeze.

The 2006 Landau offers three new designer interior colors: Copper (featured above), Cinnamon and Charleston Nickel. You'll appreciate the additional flooring options, skylights, distinctive Welbeck Birch cabinetry and spacious overhead cabinets.



Bedroom

You'll always want to turn in early to your posh master bedroom thanks to the Landau's inviting queen-size bed, roomy wardrobe closet and drawer space for days!

- Black-out shades
- Standard upgraded mattress
- Standard king-size bed (in 3645 DS model)
- Side windows in bed-slide floor plans for cross-ventilation

Bathroom

A skylight fills this cozy space with ample sunlight. You'll bask in the sun's warmth as you step out of this year's larger, deeper shower design. You'll also enjoy amenities like a stylish vanity light fixture, roomy medicine cabinet and overhead storage.



Kitchen

Evoking your inner gourmet couldn't be easier. The Landau makes sure of that with all the appliances, features and space you need to cook for two—or entertain twenty.

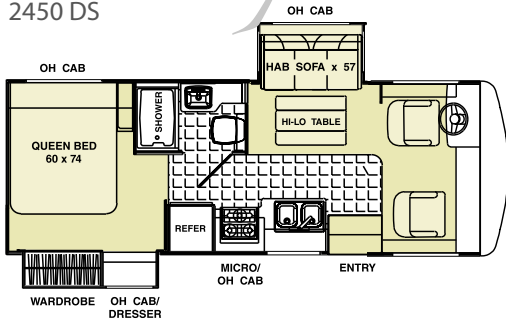
- Attractive and easy-to-clean linoleum flooring
- Generous counter space
- Larger, 1.2 cubic foot built-in microwave
- Upgraded Magic Chef® cooktops and ovens
- Pantry with adjustable shelves
- All-wood drawer construction



Landau®

Floor plans

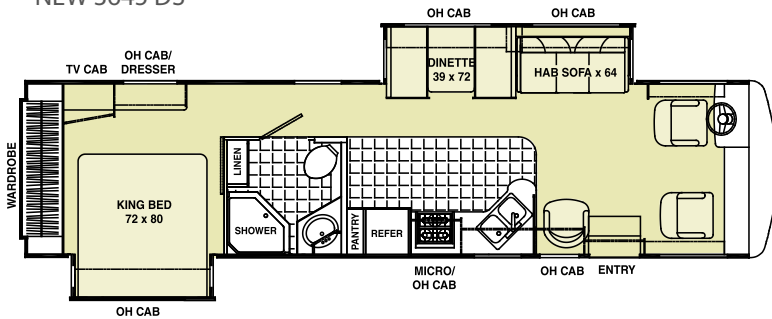
2450 DS



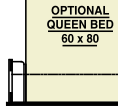
OPTIONAL FREE-STANDING DINETTE



NEW 3645 DS

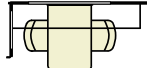


OH CAB

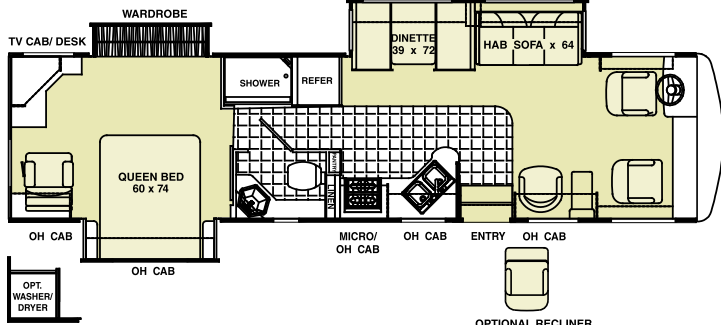


OH CAB

OPTIONAL FREE-STANDING DINETTE



3650 TS



OH CAB

OH CAB



OPTIONAL RECLINER

There's a floor plan for every traveler's game plan.

The "perfect floor plan" is different for everyone. So, no matter your lifestyle or traveling style, the Landau offers three exciting options to always help you feel at home on the road. Whether you go with the 2450 DS base model or select the new, more luxurious 3645 DS, it's a win-win proposition. With the floor plan decided, sprucing it up is your next step! With the Landau, you can create your perfect interior by mixing and matching a stunning variety of interior colors, luxurious fabrics, durable carpets and distinctive cabinetry.

Your perfect floor plan wouldn't be complete without functional features and a flashy exterior. Here are some of the exciting new offerings from the 2006 Landau that will make you do a double take:

- Sleek new front and end caps
- Stylish new standard exterior graphics (Beige or Silver)
- Two optional full body paint choices
- Driver's door with power window
- Redesigned driver-friendly dash with upgraded radio
- New 7" rearview monitor for increased visibility
- Convenient electrical outlet and phone jack near passenger's seat
- Pre-wiring for satellite dish
- One-piece thermo plastic olifin (TPO) roof
- Cavernous basement storage at entry



Landau® Features

Exterior

Standard

Radial Spare Tire
Automatic Hydraulic Leveling Jacks
Trunk Lights
Patio Light by Entry Door
Mud Flaps—Front & Rear
Double Electric Step at Entry Door
Dual Deep Cycle Auxiliary Battery System
Battery System Emergency Start
Single Water Fill w/ Change-Over Valve
Exterior Shower
Heated/Enclosed Holding Tank Comp.
Driving Lights
Battery Disconnect
Electric Supply Cord 30 Amp.
Generator Transfer Switch
60 Amp. Converter/Power Center
Awning Rails w/ Gutter
Slide Room Awning
Front Mount Mirrors—Heated/Remote w/ Turn Signals
Delay Wiper Switch
20' Sewer Hose
Black Tank Rinse System
Automotive Underbody Undercoating
Pneumatic Water Line Winterizing Fitting
Gas Struts—Exterior Compartment Doors
Beige or Silver Exterior Paint with Tape Graphics

Optional

Full Body Paint
Stainless Steel Simulators
Trailer Hitch

Deluxe Exterior Grab Handle—Entry Door Except CSA
High Gloss Sidewalls & Skirts (N/A 2450 DS)
*Electric Supply Cord 50 Amp.
Rear Ladder
Main Awning
Thermopane Windows (N/A 2450 DS)
Locking Gas Fill Door
Driver Door & Slider Window
Transit Front Cap Cover

*50 Amp. Service Standard w/ 2 Roof A/C (N/A 2450 DS)

Interior

Standard

Welbeck Birch Cabinetry
Linoleum Floor—Kitchen & Bath
Drawers in Dinette Base
Booth Dinette
Hardwood Cabinet Doors
Monitor System
Skylight in Bath
Handrail at Entry Door
Day/Night Shades—Living Room & Bedroom
Upgraded Mattress
Bedspread
Décor Pillows

Optional

Free-Standing Dinette w/ 2 Free-Standing & 2 Extra Folding Chairs (N/A 2450 DS)
Cloth Footrest Recliner (N/A 2450 DS)
Soft Touch Footrest Recliner (N/A 2450 DS)
Fantastic Fan with Rain Sensor

Comfort & Convenience

Standard

Marine-Type Toilet
Bath Light Switch
Power Bath Vent
Shower Door

Driver's Accessories

Standard

Swivel/Reclining Cloth Driver & Passenger Seats
Windshield Privacy Drapes on Track
ABS Drink Tray
12V Power Outlet at Dash

Optional

Defroster Assist Fans w/ Dash Switch
Power Driver Seat
Soft Touch Seats w/ Remote for Swivel & Recline
Hot & Cold Beverage Holder
Daytime Running Lights (Standard w/Ford Chassis and CSA Units)

Appliances

Standard

Pre-Wire for Roof A/C
Generator Ready
Ducted Roof
31,000 BTU Furnace (2450 DS)
(2) 25,000 BTU Furnaces (3645 DS)
40,000 BTU Furnace (3650 TS)
3-Burner Cooktop
1.3 Cu. Ft. Microwave Built In
Double-Door Refrigerator

Water Heater Bypass
Water Heater (6 Gal.) w/ Electric Ignition

Optional

4,000 Watt Onan® Micro-Quiet & 13,500 BTU Roof A/C (2450 DS)
4,000 Watt Onan® Micro-Quiet & 15,000 BTU Roof A/C (2450 DS)
5,500 Watt Onan® Marquis Gold & 13,500 & 11,000 BTU Roof A/C (N/A 2450 DS)
7,000 Watt Onan® Marquis Gold & (2) 13,500 BTU Roof A/Cs (N/A 2450 DS)
Heat Strip w/ Roof A/C
Low-Profile Roof A/C
3-Burner Range w/ Oven (17")
1.0 Cu. Ft. Half Time® Microwave Built In
Large Double-Door Refrigerator
Large Double-Door Refrigerator w/ Icemaker
Water Filter System
Gas/Electric Water Heater

Audio/Visual

Standard

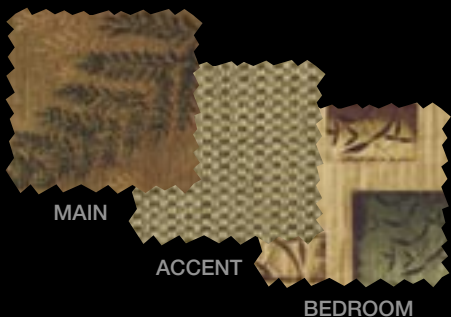
AM/FM Stereo CD
27" Flat-Screen TV—Living Room
TV Antenna w/ Booster
Cable TV & Phone Jacks
Rear Camera Cable
Pre-Wired for Satellite Dish

Optional

CB Antenna (Only)
20" Flat-Screen TV—Bedroom (120 V)
VCR/DVD Combo
TV Distribution Panel
Satellite Dish Installed
Remote Rear Camera w/Monitor

Fabrics

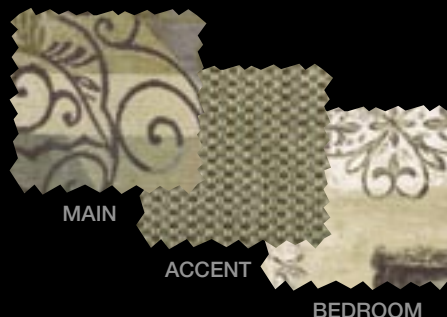
Copper



Cinnamon



Charleston Nickel



Wood



Welbeck Birch

Exterior Graphics



Standard Silver



Optional Desert Glow



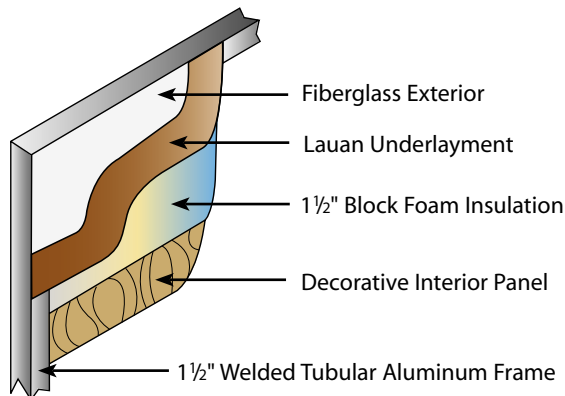
Optional Silver & Gold

Standard Beige
(featured on cover)

Specifications

	2450 DS	3645 DS	3645 DS	3650 TS	3650 TS
Chassis	Workhorse	Workhorse	Ford	Workhorse	Ford
Chassis Model	P-32	W-22	F-53	W-22	F-53
Engine Size (liter)	8.1	8.1	6.8	8.1	6.8
Wheel Base	158½"	242"	242"	242"	242"
Tire Size	225/70R 19.5	245/70R 19.5	245/70R 19.5	245/70R 19.5	245/70R 19.5
GVWR (lbs.)	15,000	22,000	22,000	22,000	22,000
UVW (lbs.)	13,150	18,450	17,800	18,650	18,050
GAWR Front (lbs.)	6,000	8,000	7,500	8,000	7,500
GAWR Rear (lbs.)	10,000	14,500	14,500	14,500	14,500
GCWR (lbs.)	19,000	26,000	26,000	26,000	26,000
Exterior Length	25' 4"	36' 5"	36' 5"	36' 5"	36' 5"
Exterior Clearance Height*	11' 7"	11' 9"	11' 9"	11' 9"	11' 9"
Exterior Width	8' 4"	8' 4"	8' 4"	8' 4"	8' 4"
Interior Width	7' 11¼"	7' 11¼"	7' 11¼"	7' 11¼"	7' 11¼"
Interior Height	6' 7"	6' 7"	6' 7"	6' 7"	6' 7"
Sleeping Capacity	4	5	5	5	5
Fuel Capacity (gal.)	60	75	75	75	75
Fresh Water Capacity (gal.)	37	70	70	75	75
Waste Water Capacity (gal.)	32	45	45	44	44
Grey Water Capacity (gal.)	32	60	60	60	60
Water Heater Capacity (gal.)	6	6	6	6	6
LP Gas Capacity (lbs.)	65	100	100	85	85
Furnace Rating (x 1,000) BTU	31	(2) 25	(2) 25	40	40
Awning Size (ft.)	10	18	18	17	17

Sidewall Construction



GVWR (Gross Vehicle Weight Rating):

The maximum permissible weight of the unit, including the UVW plus all fluids, cargo, optional equipment and accessories. For safety and product performance, do not exceed GVWR.

UVW (Unloaded Vehicle Weight):

Means the weight of a motorhome as manufactured at the factory with fuel, engine oil and coolants. The above UVWs represent a motorhome with typical options. UVW will vary significantly based on option selection.

GAWR (Gross Axle Weight Rating):

The total weight each front/rear axle, suspension and tire system is designed to carry. When loading the unit, care should be taken to balance cargo weight in consideration of the GAWRs.

GCWR (Gross Combined Weight Rating):

The maximum total weight of the loaded unit plus a tow vehicle. This includes the weight of both the unit and tow vehicle, fuel for each, all other fluids, cargo, occupants, optional equipment and accessories.

* Includes clearance for air conditioner and satellite dish.

IMPORTANT NOTE: All capacities are approximate and all dimensions are nominal. Georgie Boy motorhomes are designed to allow for a wide variety of uses, extended trips with two people or short trips with multiple people. Accordingly, each unit allows ample room for sleeping, seating, fluids and cargo. While the customer is the beneficiary of this design, the customer also bears the responsibility to select the proper combination of passengers, cargo, load and tow vehicle without exceeding the chassis weight capabilities. Consumers may need additional braking capacity to tow loads greater than 1,000 pounds. Seat belts should always be worn for passenger safety. Seat belts are provided at most locations to allow convenience in selecting which seat to occupy. However, it is not intended that all seating positions equipped with a seat belt may be occupied while the vehicle is in motion, without regard to other weight factors. All Georgie Boy motorhomes are designed to ensure that the number of passengers allowed while the vehicle is in motion will always at least equal the stated sleeping capacity. Though extra seat belts may be provided, for your safety and the proper operation of your vehicle, limit your passengers to the number allowed by the Net Carrying Capacity of your vehicle.

We hope that you find this comprehensive, factual catalog helpful. All information contained in this brochure is believed to be accurate at the time of publication. However, during the model year, it may be necessary to make revisions and Georgie Boy reserves the right to make all such changes without notice, including changes in prices, colors, materials, equipment and specifications, as well as the addition of new models and the discontinuance of models shown in this brochure. Also, some equipment shown or described is optional and available at extra cost. Therefore, please consult with your Georgie Boy dealer to confirm the existence of any materials, design or specifications that are material to your purchase decision.

Your Dealer:

Georgie Boy Mfg., LLC • 21888 Beck Drive • Elkhart, IN 46516 • Phone (574) 295-7344
 Fax (574) 389-0823 • Sales (877) 876-9024 • Service (800) 521-8733
 Web Site: www.georgieboy.com • Owners Club: www.georgieboyrclub.com